

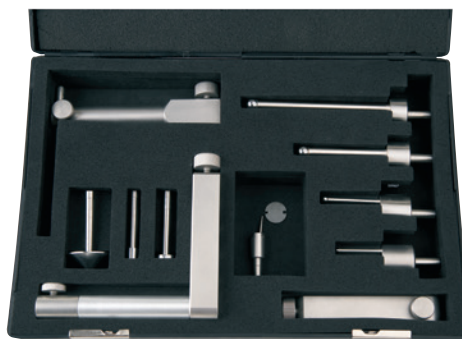
Digimar 817 ts1

Probe Set

FEATURES

- Large accessory kit
- Packaged in a practical plastic case
- Consisting of:
 - Depth probe
 - Carrier with extended holder
 - Disc measuring probe for grooves, etc.
 - Conical measuring probe
 - Cylindrical measuring probe
 - Holder for test indicator styli with M2 thread
 - Carrier including 4 spherical probes with shaft diameter 8 mm

- Package contains: case

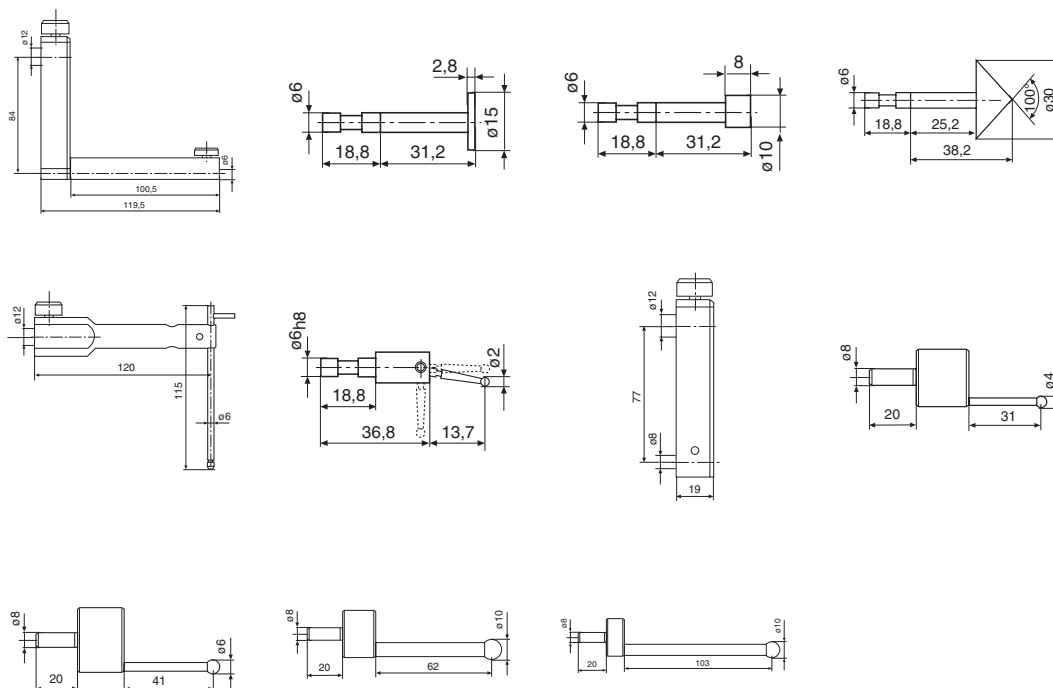


TECHNICAL DATA

Order no.	Product type
4429019	817 ts1

COMPONENTS INCLUDED IN SET

Order no.	Product name	Product type
4429219	Carrier for a probe, mounting hole 6 mm, a = 100.5 mm, b = 119.5 mm, c = 84 mm	817 h2
4429226	Disc probe \varnothing 15 mm	S15/31.2
4429227	Cylindrical probe \varnothing 10 mm	Z10/31.2
4429228	Taper probe	MKe 30
4429221	Depth probe inc. Holder	TMT 120
4429256	Probe with M2 threads for 3 styli positions ($0^\circ/10^\circ/90^\circ$), incl. styli 800 ts \varnothing 2.0 mm	KM 2
4429220	Carrier for probes 817 CLM, mounting hole 8 mm	817 h4
7023813	Probe with mount, \varnothing 4.0 mm	K 4/30
7023816	Probes with mount, \varnothing 6 mm	K 6/40
7023810	Probes with mount, \varnothing 10.0 mm	K 10/60
7023615	Probes with mount, \varnothing 10.0 mm	K 10/100

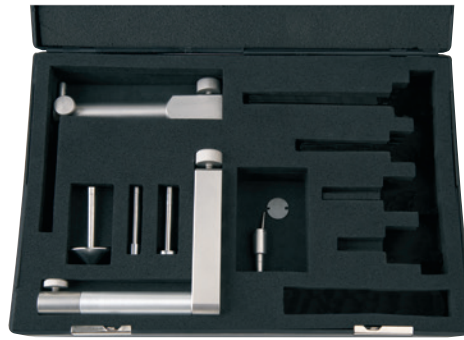


Digimar 817 ts2

Probe Set

FEATURES

- Small accessory kit
- Packaged in a practical plastic case
- Consisting of:
 - Depth probe
 - Carrier with extended holder
 - Disc measuring probe for grooves, etc.
 - Conical measuring probe
 - Cylindrical measuring probe
 - Holder for test indicator styli with M2 thread
- Package contains: case

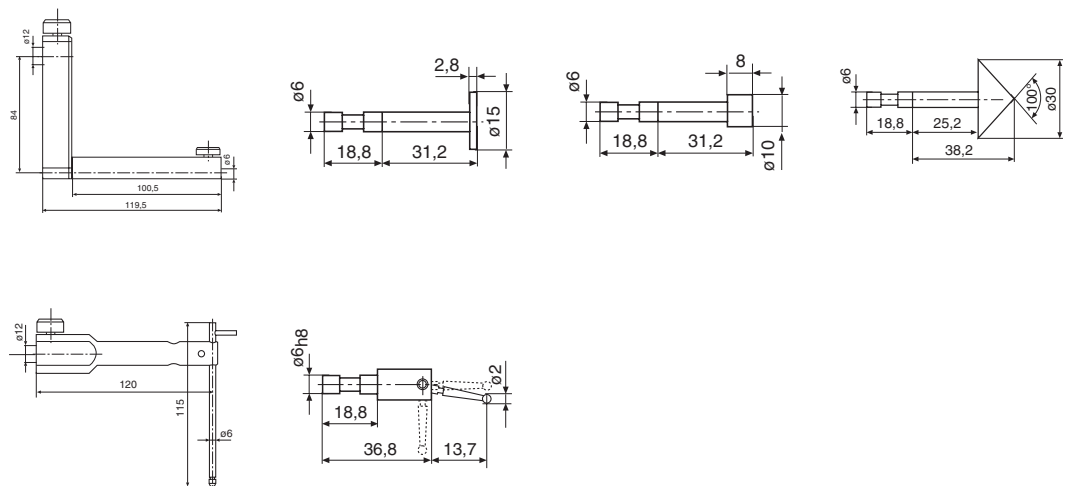


TECHNICAL DATA

Order no.	Product type
4429018	817 ts2

COMPONENTS INCLUDED IN SET

Order no.	Product name	Product type
4429219	Probe carrier, mounting hole 6 mm, a = 100.5 mm, b = 119.5 mm, c = 84 mm	817 h2
4429226	Disc probe \varnothing 15 mm	S15/31.2
4429227	Cylindrical probe \varnothing 10 mm	Z10/31.2
4429228	Taper probe	MKe 30
4429221	Depth probe including holder	TMT 120
4429256	Probe with M2 threads for 3 styli positions ($0^\circ/10^\circ/90^\circ$), incl. styli 800 ts \varnothing 2.0 mm	KM 2

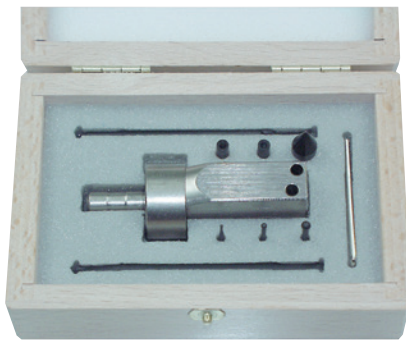


Digimar 817 ts3

Universal Probe Set

FEATURES

- Accessory kit for small parts and delicate grooves, recesses and bores
- Packaged in a practical wooden case
- Suitable for 817 h4 carriers with 8 mm mounting bore (4429220)
- Consisting of:
 - Base with 8 mm holding shaft
 - Depth probe
 - Probe shoe for grooves and recesses
 - Spherical measuring probe
 - Conical measuring probe
 - Extension
 - Adapter for M2.5 measuring anvils
- Package contains: case

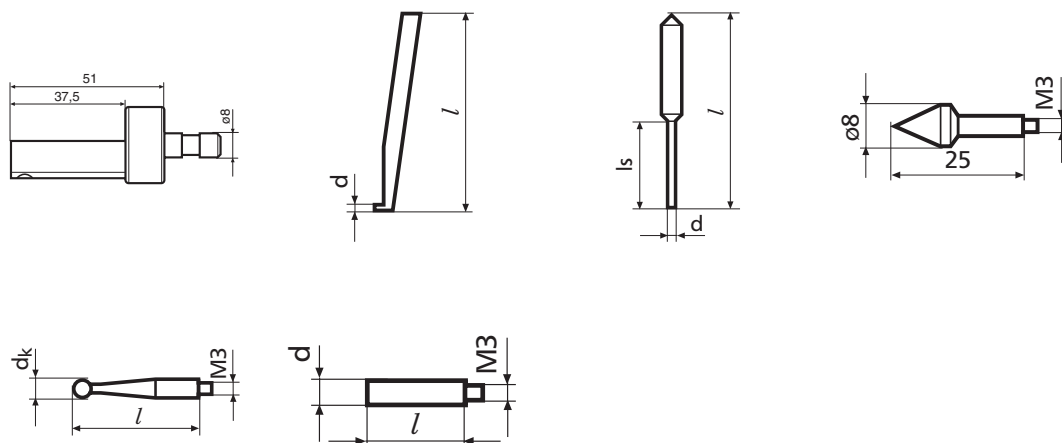


TECHNICAL DATA

Order no.	Product type
7034000	817 ts3

COMPONENTS INCLUDED IN SET

Order no.	Product name	Product type
3015917	Probe carrier	Gk/8
3015918	Measuring crook, $d = 0.5 \text{ mm}$, $l = 78 \text{ mm}$	TS 0.5/78
3015919	Probe pin/tip, $d = 1.2 \text{ mm}$, $l = 75 \text{ mm}$, $l_s = 15.5 \text{ mm}$	T 1.2/75
3015920	Taper probe	MKe 8
3022000	Spherical probe, $d_k = 3.0 \text{ mm}$, $l = 24 \text{ mm}$	K3/24
3022001	Spherical probe, $d_k = 2.0 \text{ mm}$, $l = 24 \text{ mm}$	K2/24
3022002	Spherical probe, $d_k = 1.0 \text{ mm}$, $l = 24 \text{ mm}$	K1/24
3015888	Extension M3 - M2.5, $d = 4 \text{ mm}$, $l = 20 \text{ mm}$	V/M2.5
3015921	Extension M3 - M3, $d = 4 \text{ mm}$, $l = 20 \text{ mm}$	V/M3



Digimar 817 h1 / 817 h2 / 817 h5

Probe Carriers

FEATURES

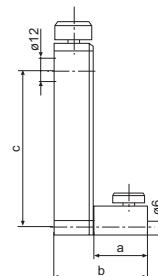
- Carrier for probes with 6 mm holding shaft
- Used for measurements at increased measuring depth (817 h2)
- Pivoting (817 h5) e.g. for aligning a cylindrical measuring probe



TECHNICAL DATA

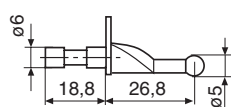
Order no.	Product type
4429154	817 h1
4429219	817 h2
4429454	817 h5

Order no.	a	b	c	Mounting hole
	mm	mm	mm	
4429154	27.5	46.5	84	6 mm
4429219	100.5	119.5	84	6 mm
4429454	35	54	86	6 mm

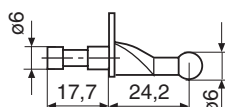


ACCESSORIES

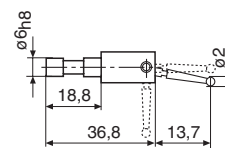
Order no.	Product name	Product type
4301865	Mounting shaft \varnothing 6 mm	800 a6
4429158	Spherical probe, \varnothing 5.0 mm	K5/51
4429226	Disc probe \varnothing 15 mm	S15/31.2
4429227	Cylindrical probe \varnothing 10 mm	Z10/31.2
4429228	Taper probe	MKe 30
4429254	Spherical probe for 817 CLM, \varnothing 6 mm	K6/51
4429256	Probe with M2 threads for 3 styli positions ($0^\circ/10^\circ/90^\circ$), including styli 800 ts \varnothing 2.0 mm	KM 2



K5/51



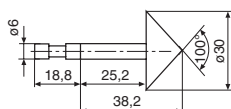
K6/51



KM 2



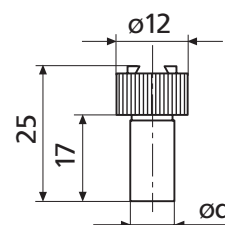
S15/31.2



MKe 30



Z10/31.2



800 a6

Digimar 817 h4

Probe Carriers 817 CLM

FEATURES

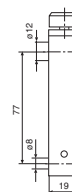
- Carrier for measuring anvils with 8 mm holding shaft and weighing 102 g
- Suitable for the CXt2 universal measuring probe set
- Compatible with Digimar CX1 and CX2 probes weighing 102 g



TECHNICAL DATA

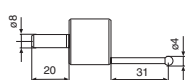
Order no.	Product type
4429220	817 h4

Order no.	Mounting hole
4429220	8 mm

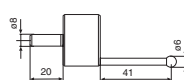


ACCESSORIES

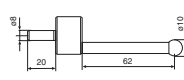
Order no.	Product name	Product type
3015888	Extension M3 - M2.5, d = 4 mm, l = 20 mm	V/M2.5
3015917	Probe carrier	Gk/8
3015918	Measuring crook, d = 0.5 mm, l = 78 mm	TS 0.5/78
3015919	Probe pin/tip, d = 1.2 mm, l = 75 mm, ls = 15.5 mm	T 1.2/75
3015920	Taper probe	MKe 8
3015921	Extension M3 - M3, d = 4 mm, l = 20 mm	V/M3
3022000	Spherical probe, d _k = 3.0 mm, l = 24 mm	K3/24
3022001	Spherical probe, d _k = 2.0 mm, l = 24 mm	K2/24
3022002	Spherical probe, d _k = 1.0 mm, l = 24 mm	K1/24
7023615	Probes with mount, ø 10.0 mm	K 10/100
7023810	Probes with mount, ø 10.0 mm	K 10/60
7023813	Probe with mount, ø 4.0 mm	K 4/30
7023816	Probes with mount, ø 6 mm	K 6/40



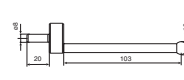
K 4/30



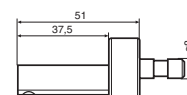
K 6/40



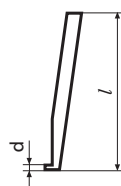
K 10/60



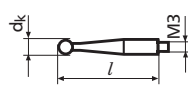
K 10/100



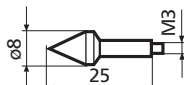
Gk/8



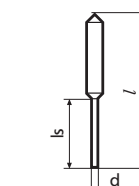
TS 0.5/78



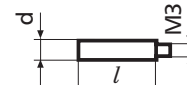
K3/24; K2/24;
K1/24



MKe 8



T 1.2/75



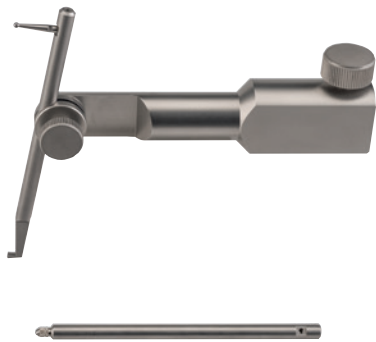
V/M2.5; V/M3

Digimar TMT 120 / TMT 120 S

Depth Probe including Holder

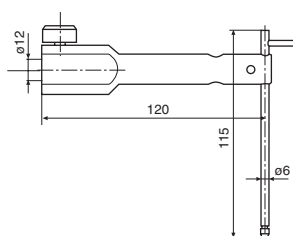
FEATURES

- Depth probe and carrier for measurements in vertical bores and recesses
- Interchangeable depth probe
- M2 and M2.5 connecting anvils
- M2.5 spherical contact point 901 H
- pivoting (TMT 120 S only)
- Second depth probe with probe shoe for groove measurement (TMT 120 S only)
- M2 stylus 800 ts with 2 mm ball (TMT 120 S only)

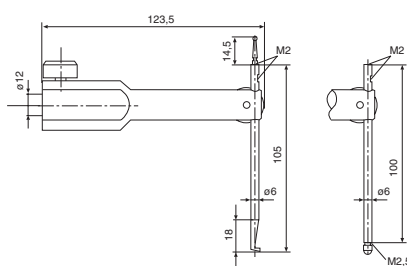


TECHNICAL DATA

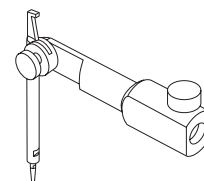
Order no.	Product type
4429221	TMT 120
4429421	TMT 120 S



TMT 120

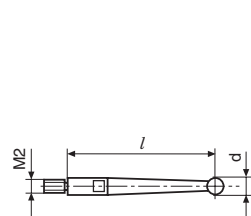


TMT 120 S

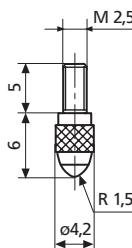


ACCESSORIES

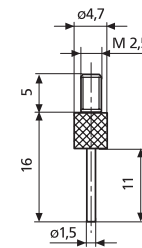
Order no.	Product name	Product type
4305870	Stylus ϕ 1.0 mm, carbide, l = 14.5 mm	800 ts
4305850	Stylus ϕ 2.0 mm, carbide, l = 14.5 mm	800 ts
4305871	Stylus ϕ 3.0 mm, carbide, l = 14.5 mm	800 ts
4309051	Stylus ϕ 2.0 mm, ruby, l = 14.5 mm	800 tsr
4360001	Standard contact point, steel, r = 1.5 mm	901
4360002	Standard contact point, carbide, r = 1.5 mm	901 H
4360003	Standard contact point, ruby, r = 1.5 mm	901 R
4360241	Pin contact point, carbide, l = 11 mm, measuring surface ϕ 1.5 mm	911 H2



800 t



901



911 H2

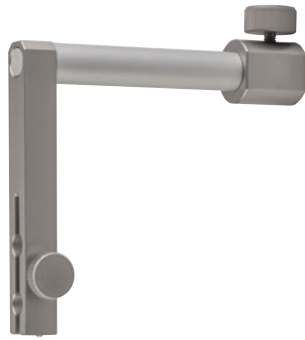
For additional pins see MarTest and MarCator

Digimar 817 h3

Carrier for Checking Perpendicularity

FEATURES

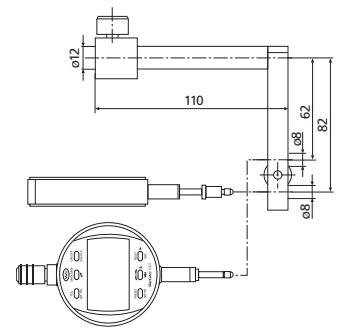
- Carrier for perpendicularity measurement
- Suitable for analog and digital dial indicators
- Ideal with P1514H measuring probe (817 CLM only)



TECHNICAL DATA

Order no.	Product type
4429206	817 h3

Order no.	Mounting hole
4429206	8 mm



ACCESSORIES

Order no.	Product name	Product type
4102410	Data connection cable RS232C (2 m)	16 EXr
4337620	Digital indicator, 0.0005 mm, 12.5 mm	1086 R
4426810	Incremental probe for Digimar 817 CLM	P1514 H



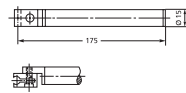
1086 R

Digimar 814 N

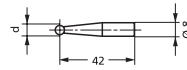
Height Measuring and Scribing Instrument

ACCESSORIES

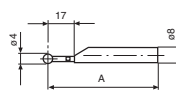
Order no.	Product name	Product type
4426510	Probe arm 150 mm, mounting hole 8 mm	814 t
4426525	Spherical probe, ball diameter 2.0 mm	814 m
4426526	Spherical probe, ball diameter 3.0 mm	814 m
4426512	Spherical probe, ball diameter 4.0 mm	814 m
4426527	Spherical probe, ball diameter 5.0 mm	814 m
4426511	Spherical probe, ball diameter 6 mm	814 m
4426528	Spherical probe, ball diameter 7 mm	814 m
4426509	Spherical probe, ball diameter 8.0 mm	814 m
4426498	Spherical probe ruby ball, $\varnothing = 4.0$ mm	817 Cl-r
4426513	Disc probe	814 s
4426514	Probe holder	814 h
4426515	Scriber for height gage 814 G	814 a
4426516	Holder	814 kh
4426071	Measuring taper 0–15 mm	817 ks1
4426072	Measuring taper 14–20 mm	817 ks2
4426073	Measuring taper 18–24 mm	817 ks3
4426074	Measuring taper 23–30 mm	817 ks4
4426517	Two direction probe, $\varnothing = 4.0$ mm	814 u
4426518	Interchangeable probe arm, $\varnothing = 2.0$ mm	814 ua
4426434	Holder with connection thread M2.5 / M1.6 / M1.4	817 Cl-am
4426433	Stylus with exchangeable measuring pin	817 Cl-sa
4426435	Stylus with parallel measuring faces	817 Cl-p
4426616	Dust cover for 0–320 mm	
4426619	Dust cover for 0–620 mm	
4102510	Data connection cable RS232C (2 m)	16 ESv
4102235	Transmitter for e-Stick	1082 e
4102230	Receiver	e-Stick
4102330	Opto USB Adapter cable RS232-USB (0.2 m)	Opto USB
4102520	Battery 3 V, CR 2032	



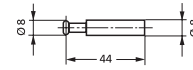
814 t



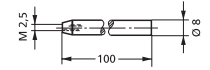
814 m



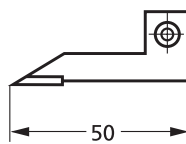
817 Cl-r



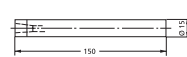
814 s



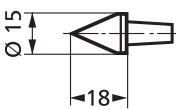
814 h



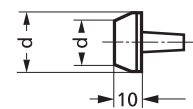
814 a



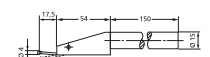
814 kh



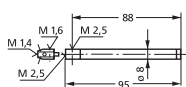
817 ks1



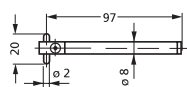
817 ks2; 817 ks3;
817 ks4



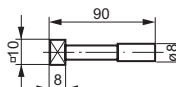
814 u



817 Cl-am



817 Cl-sa



817 Cl-p



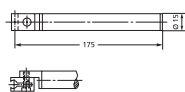
e-Stick

Digimar 814 G

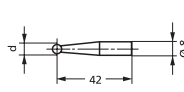
Height Measuring and Scribing Instrument

ACCESSORIES

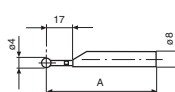
Order no.	Product name	Product type
4426510	Probe arm 150 mm, mounting hole 8 mm	814 t
4426525	Spherical probe, ball diameter 2.0 mm	814 m
4426526	Spherical probe, ball diameter 3.0 mm	814 m
4426512	Spherical probe, ball diameter 4.0 mm	814 m
4426527	Spherical probe, ball diameter 5.0 mm	814 m
4426511	Spherical probe, ball diameter 6 mm	814 m
4426528	Spherical probe, ball diameter 7 mm	814 m
4426509	Spherical probe, ball diameter 8.0 mm	814 m
4426498	Spherical probe ruby ball, $\varnothing = 4.0$ mm	817 Cl-r
4426513	Disc probe	814 s
4426514	Probe holder	814 h
4426515	Scriber for height gage 814 G	814 a
4426516	Holder	814 kh
4426071	Measuring taper 0–15 mm	817 ks1
4426072	Measuring taper 14–20 mm	817 ks2
4426073	Measuring taper 18–24 mm	817 ks3
4426074	Measuring taper 23–30 mm	817 ks4
4426517	Two direction probe, $\varnothing = 4.0$ mm	814 u
4426518	Interchangeable probe arm, $\varnothing = 2.0$ mm	814 ua
4426434	Holder with connection thread M2.5 / M1.6 / M1.4	817 Cl-am
4426433	Stylus with exchangeable measuring pin	817 Cl-sa
4426435	Stylus with parallel measuring faces	817 Cl-p
4426616	Dust cover for 0–320 mm	
4426619	Dust cover for 0–620 mm	
4102510	Data connection cable RS232C (2 m)	16 ESv
4102235	Transmitter for e-Stick	1082 e
4102230	Receiver	e-Stick
4102330	Opto USB Adapter cable RS232-USB (0.2 m)	Opto USB
4102520	Battery 3 V, CR 2032	



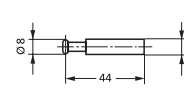
814 t



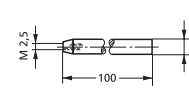
814 m



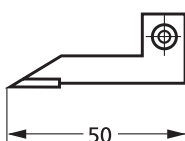
817 Cl-r



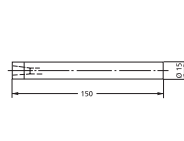
814 s



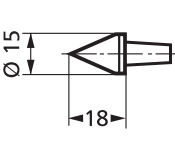
814 h



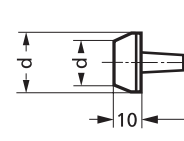
814 a



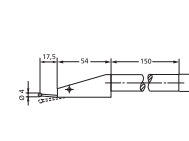
814 kh



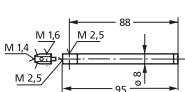
817 ks1



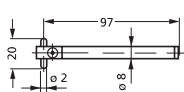
817 ks2; 817 ks3;
817 ks4



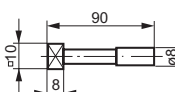
814 u



817 Cl-am



817 Cl-sa



817 Cl-p



e-Stick